



***Are your families projects entered?***

July 10th Deadline

Green Cards are not needed this year, we will have cards for you at check-in

**Learn about fair entry:** <https://www.pottawatomie.k-state.edu/fair/index.html>

**Enter fair projects:** <https://pottawatomie-ks.fairentry.com/Fair/SignIn/3832>

- Please login with your 4HOnline account information
- Livestock youth
  - Be sure to sign up for the "Showmanship" class in addition to your project class
  - The animal you add right now can be changed later on (in case you're not sure which nominated animal you will show)
- Entry information is saved as you go
- Please enter all of your families entries before final submission
- If you are unable to complete online project entry, please let us know! We can help!
- Recommended browsers: Google Chrome or Mozilla Firefox.

**4-H and Extension COVID-19 update**

Come July 4th, we will once again be allowed face-to-face programming for extension and 4-H events. However, please keep in mind that while the extension guideline will be lifted, we must still follow any county guidelines. Recommendation for transitioning back into 4-H programming can be found at the end of this newsletter.

***Looking to become involved in the fair? Add to a KAP application? Demonstrate 4-H leadership?***

Consider becoming a fair superintendent!

Now looking for assistance with: Family Studies, Home Environment, Self-Determined, and Wildlife

Contact Daniel to find out more.

4-H'ers, Parents, and Families all accepted



## **Things to know for Pre-Fair**

Note: We are requesting that families do not linger longer than necessary for judging. As well, face masks are highly encouraged.

**Location:** Fair East Building - Arts and Crafts, Fiber Arts

Onaga High School - Fashion Revue, Entomology, Table Setting, Geology, FACS judging

*Pre-Fair map will be available in the July Pre-fair letter*

**Judging Times:** Judging Times will be announced following the July 10th entry deadline.

Anticipate morning project judging with Fashion Revue at 6:00 pm

**Fashion Revue :** Scripts Due July 10th, form fillable document is now available on our website. Please fill out the script and picture portion!

## **Things to know for Fair**

Photo Boards: Photo boards are available at the KSRE office in Westmoreland.

Cost for \$1 per board/sleeve combo

Food Judging Schedule for Wed. July 29th

Foods Judging will happen in the afternoon. The specific schedule will be released after the entry deadline.

NO PRE-FAIR POULTRY TESTING for 2020.

Due to a nationwide shortage of the agent necessary for testing, the Kansas Department of Agriculture has waived pullorumtyphoid testing for fairs this summer.

Foodstand

Due to COVID-19 Precaution, there will NOT be a 4-H ran food stand this year.



## Things to know for fair cont.

### Rabbit Show

Due to the threat of a new rabbit disease, we are following KDA recommendation and NOT having rabbits at the fair. We are currently finalizing new classes so rabbit youth to showcase their knowledge. More info to come shortly.

### Arrival and Weigh-in

- All livestock must be on fairground premises by 9a Thursday. Early Arrival is available on Wed.
- Livestock Weigh-in times on Thursday August, 1st

Swine: 8a-9a

Beef: 9a-10a

Sheep: 10a-11a

Market goat: 10a-11a

### YQCA Certification Required for Market Beef Shipped to Tyson

If you will (or might) ship market beef to Tyson for base bid after the fair, you MUST submit your YQCA certificate to the Extension Office or [sblocker@ksu.edu](mailto:sblocker@ksu.edu) PRIOR to the fair. Preferred deadline is pre-fair entry by July 10, 2020. Online training costs \$12 and training must be done each year. Website for training is <https://yqca.learngrow.io/Account/Login> and you can log on using your 4-H Online account.

### Livestock Sale

The youth livestock sale will be Saturday August 1st, beginning at 5p.

**Important: Thank your buyers!** Please make sure to give them a proper thank you and show appreciation for their support. **We are asking the youth not to hand out the buyer ribbons and collect their money until after the sale.** This is to reduce confusion and congestion.

### *Speaking of Livestock....*

We are looking for additional Sponsors for:

“Livestock Skillathon” , “Champion Overall Meat Goat”, and “Champion Overall Breeding Swine”

Contact the office if you’d like to help sponsor one of these awards. Thank you!



### **Pottawatomie County Fair Livestock Spreadsheet**

Please look at the linked Google Sheet below to make sure that all your county fair animals are listed and we have correct data. We did not put registered breeding stock on the Google Sheet. We will manage them the same as in the past with their registration paperwork. Anyone with this link can edit our Pottawatomie County Fair Livestock Google Sheet.

If you missed submitting your bucket calf, market, or commercial breeding livestock information, please contact Shannon immediately. Columns in green are required. Make any appropriate edits.

<https://docs.google.com/spreadsheets/d/1Ulv3jQrdWLgCNUwoLRLKMdAOFyR8l4TkGdicp9QthPg/edit?usp=sharing>

Please double check this Google Sheet and make any revisions by June 30, 2020. We will continue to allow families to change exhibitors within their family (family nomination) and allow female livestock to be shown as either market or breeding as long as they are on this list

### **Livestock Judging Contest – Southwind Extension District**

Yates Center, KS, 8:00 am, Monday, July 6, 2020

\$5 per person plus lunch

8 classes; senior (14+) – 3 reasons, junior (13 & under) – 1 reasons, 2 questions

### **4-H SpaceTech UAS (Drone) Fair Projects**

4-H members enrolled in SpaceTech that are interested in entering a UAS (drone) fair project this year, please contact Shannon [sblocker@ksu.edu](mailto:sblocker@ksu.edu) as soon as possible. Flights need to be scheduled between July 5 and July 20, with a separate image processing time prior to fair. We now have the software to process our own images, so youth will get that hands on experience as well. Brain-storm project ideas and/or talk to Shannon now. Projects can be as simple as a video or as detailed as a 2D or 3D map with measurements.



## County Fair Responsibilities

### CLEAN-UP

Monday, July 22— The annual clean-up of the fairgrounds will be held at 6:00 p.m. We will appreciate all the helpers your club can send. Bring brooms, hammers, rags, cleaning supplies, etc.

### MAINTAINING FAIRGROUNDS

**Thursday**-- Blackjack, Kaw Valley, Triple V

**Friday**- Lucky'Leven, Shining Star, Jayhawkers

**Saturday** - Olsburg, Dutch Mill, Westy Trailblazers

Clubs are responsible for keeping grounds and exhibit buildings free of litter throughout the day and evening. All club members are expected to help pick up trash and sweep as needed all during the day --- **not just at night**--- on your designated day. Extra trash can liners will be placed in the bottom of the trash cans for easy replacement before they overflow. Trash needs to be carried to the larger dumpsters at the rear of the Food Stand often.

### DURING THE FAIR

**Blackjack, Shining Star** — Fairgrounds Development—Fair // **Dutch Mill** - Clothing Judging — Pre-fair

**Jayhawkers, Kaw Valley** — Arts & Crafts Judging — Pre-Fair // **Lucky'Leven** - FACS Judging — Pre-Fair

**Olsburg** — Photography Judging — Fair /// **Triple V** — Food Sale — Fair

**Westy Trailblazers** — Fashion Revue — Pre-Fair //// **TBD** — Fashion Revue — Fair

### AFTER FAIR CLEAN-UP

**Blackjack** — East Building

**Kaw Valley** — Dairy, Bucket Calf

**Shining Star** — Poultry Area

**Westy Trailblazers** — Beef Area

**Dutch Mill** — Swine Area

**Lucky'Leven** — Foodstand

**Triple V** — Rabbit Area

**Jayhawkers** — Open areas

**Olsburg** — West Building

**TBD**—Sheep

# Kids Corner

## Bird's (or Bug's) Eye View

### Description

What does a bug see? What does a bird see? Create photos from different points of view!

### Supplies



Camera

or



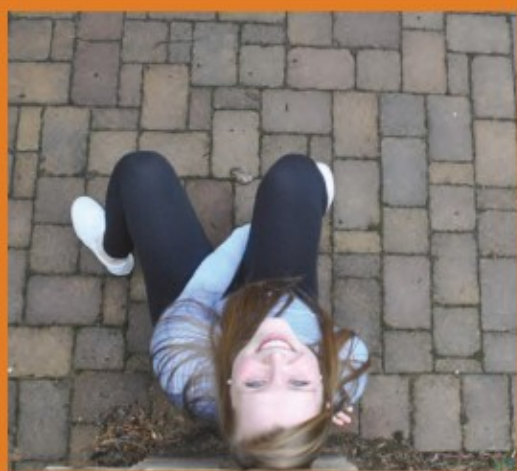
Cell Phone

### Background

It is natural for us to look at our world from a 'normal' viewpoint. We view things from our standing position and it is easy to take photos in the same way.

But what does the world look like from a different point of view? What does a bug see? What does a bird see? Taking photos from a different viewpoint can make a subject more interesting, transforming the composition of the photo into something new that can catch someone's attention.

Try this activity to practice looking at things differently!



### Activity Steps

Take two or three photos in each of these positions:

1. Lie on your stomach. Look at things from the ground level.
2. Lie on your back. Look up for clouds, buildings, trees, birds and planes.
3. Lean over. Look down at your feet or down from a second-floor window.
4. Bend sideways. Slant the horizon for an alternate viewpoint.

After you've taken the photos, compare the different versions you took and identify any differences between the photos. What makes each one unique?



## Date and Deadlines

### July

- July 4th In-Person 4-H activities may resume following county guidelines
- July 8th 4-H Council Meeting @ Sunflower room
- July 10 County Fair entries due
- July 22 Fair Grounds clean up @ 6pm
- July 24 Pre-Fair Judging @ Onaga School
- July 24 Fashion Revue
- July 25 Horse Show
- July 29 Foods Judging
- July 29 - Aug 2 Pottawatomie County Fair



# Ongoing COVID-19 Mitigation Guidance



In response to the COVID-19 outbreak in Kansas and to keep staff, participants, volunteers, and the public safe, K-State Research and Extension made the difficult decision to suspend all face-to-face programming through July 4, 2020. All 4-H events, contests and activities that were planned at the state, regional, district, county and local levels were postponed, canceled or converted to non-face-to-face experiences, including programs led by local 4-H volunteers.

## TRANSITIONING BACK TO FACE-TO-FACE PROGRAMMING AFTER JULY 4

We must remain vigilant to keep safety of the participants, volunteers, and public top priority as we transition to face-to-face programming. Community volunteer leaders must consider the following but note that **no participant should be asked to participate in any manner that makes them feel uncomfortable or is unsafe.**

- Can the program be offered using a virtual platform?
- Are there participation options for families interested in participating but concerned about the health/safety of their family?
- What precautions are you taking to minimize the participants' risk of exposure to COVID-19?
- Have you communicated public health etiquette to be practiced at the 4-H program?
  - Stay home if you have tested positive, are showing COVID-19 symptoms, or had close contact with a person with COVID-19 in the last 14-days.
  - Practice hand hygiene and respiratory etiquette:
    - Frequently wash hands with soap and water for at least 20 seconds. If soap and water is not readily available use hand sanitizer with at least 60% alcohol.
    - Cover cough and sneezes with a tissue or use the inside of your elbow.
  - Use Cloth face coverings.
  - Maintain a 6-ft distance with others as much as possible.

## GUIDELINES FOR 4-H YOUTH PROGRAMMING

### **PRIOR TO THE PROGRAM**

- Clean and disinfect surfaces and objects that are frequently touched and establish a plan for cleaning and disinfecting every hour.
- Provide access to hand-washing stations with soap, hand sanitizer with at least 60 percent alcohol, paper towels, tissues, disinfectant wipes, cloth face coverings, and no-touch trash cans as feasible.
- Modify layouts: Space seating at least 6-ft apart.



## DURING THE PROGRAM

- Reduce the physical closeness of participants and the length of time they are close to each other or to leaders
- Model and encourage the use of cloth face coverings.
- Reduce the amount of necessary touching of shared equipment/materials
- Whenever possible, group participants/volunteers from the same household together.
- Discourage handshakes, hugs or any other signs of greeting that violate physical distancing.
- Limit sharing of items that are difficult to clean, sanitize, or disinfect.
- Circulate outdoor air as much as possible.
- Prioritize outdoor activities where social distancing can be maintained as much as possible.
- Food: If providing food at an event, provide pre-packaged boxes or bags for attendees instead of a buffet or family-style meal.
- Keep a record of participants' contact information.

K-State Research and Extension will continue to monitor and follow CDC, state and county guidelines as well as scientific research and make adjustments to plans accordingly.

Adapted from *Ongoing COVID-19 Mitigation Guidance for Johnson County 4-H*, Ami Lin, 4-H Youth Development Agent, Johnson County.

## RESOURCES

The information was gathered from the CDC website:

Guidance for Youth Programs: <https://www.cdc.gov/coronavirus/2019-ncov/community/schools-childcare/index.html>

- Prevention: <https://www.cdc.gov/coronavirus/2019-ncov/prevent-getting-sick/index.html>
- Avoid contact for 14 days: <https://www.cdc.gov/coronavirus/2019-ncov/if-you-are-sick/care-for-someone.html> "Caregivers can leave their home 14 days after their last close contact with the person who is sick (based on the time it takes to develop illness), or 14 days after the person who is sick meets the [criteria to end home isolation](#)."

## Kansas State University Agricultural Experiment Station and Cooperative Extension Service

K-State Research and Extension is an equal opportunity provider and employer. Issued in furtherance of Cooperative Extension Work, Acts of May 8 and June 30, 1914, as amended. Kansas State University, County Extension Councils, Extension Districts, and United States Department of Agriculture Cooperating. J. Ernest Minton, Director.

June 2020