



**Shout Out!!!**

**April Shout-Out: Jay Rezac & Rezac Land and Cattle Company**

We are pleased to recognize Jay Rezac and Rezac Land and Cattle Company for their outstanding contributions to our county's youth and agricultural programs. The Rezac family generously provides their facilities each year to ensure the safe and efficient tagging and weigh-in of our county's beef projects. Beyond this essential support, Jay is an integral member of the Fair Board, plays a key role in coordinating various rodeo events throughout the year, and is continually working to improve our fairgrounds' arena. While these are the visible roles he fulfills, his leadership extends far beyond what meets the eye. Behind the scenes, Jay goes above and beyond—whether it's assisting with veterinary needs to help families save on costs, helping exhibitors find markets for their beef projects, or offering guidance and encouragement to participants. His dedication to youth development, agriculture, and community is evident in all that he does. With his wisdom, kindness, and genuine passion for supporting young people, Jay exemplifies true leadership and serves as an outstanding role model for the next generation. We are grateful for his unwavering commitment to our county and its future. Jay, Thank you so much all you have done to "Make the Best Better"!

*\*\*If you have anyone that you would love to recognize for going above and beyond in 4-H please email a brief description and a photo if you have one to [asharpe@ksu.edu](mailto:asharpe@ksu.edu).\*\**



**County Council Updates**

- The next County Council meeting will be held on 6/02/25 at 7pm in the Sunflower room!
- **2025 Fair Theme is Grit, Grace and Grand Champion!**

**Small Animal Tagging and ALL Livestock Tagging**

- Small Animal Tagging: **April 30th: 5pm-7pm @** Extension Office, Westmoreland
- By **MAY 15** ALL LIVESTOCK **MUST** BE TAGGED
- Please schedule livestock tagging in advance!

**Pottawatomie County Spring Fling Show**

- April 19th
- Onaga Kansas Fair Grounds
- Click [Here](#) to resister!

**Area Livestock Shows** (Click Links for more info)

- [Aggieville Showdown: April 4-5: Manhattan, KS](#)
- [Quality Beef Days: April 12: Blue Rapids, KS](#)
- [Northern Exposure Steer & Heifer: April 13: Belleville, KS](#)
- [Pottawatomie County Spring Fling: April 19: Onaga, KS](#)
- [Lyons Showdown: May 10: Lyons, KS](#)
- [Shawnee County Livestock Spring Show: May 10th: Holton,](#)
- [Wild Bill Showdown: May 10th: Abilene, KS](#)
- Wabaunsee County Livestock Show: May 30-June 1: Alma, KS

APRIL 19, 2025  
POTTAWATOMIE COUNTY  
**SPRING FLING**  
★ LIVESTOCK SHOW ★



**Show Times**  
Sheep-Goat - 9:00 AM  
Cattle - 12:00 PM  
Swine - 5:00 PM  
OR 30 Minutes After  
Completion of Prior Species

**New for 2025**  
Contestants can be up to 21 years of age.  
Showmanship for 4-H age contestants only.  
No showmanship 19-21.

**Online Registration**  
[www.showman.app](http://www.showman.app)  
\$10 Late Fee Day of Show

**Details**  
Judge: Jacob Klaudt  
Elite Show Supply Trailer  
Showmanship \$5 Per Specie  
Concessions on Site

**Camping Spots**  
Available for \$35  
785-477-2317

**POTTAWATOMIE COUNTY FAIRGROUNDS**  
**ONAGA, KANSAS**

Questions Contact  
Darrin Figge 785-456-5762 [defigge@hotmail.com](mailto:defigge@hotmail.com)

## **Cool Careers Video Contest**

Have you ever wanted to try your hand at video production? Kansas 4-H and HirePaths are introducing a Cool Careers 4-H Video Contest, so here's your chance to become director, cinematographer, editor and/or producer of your own video! This competition allows members to learn about a career and then produce a video to create their own episode of the series Cool Careers. Click [HERE](#) for more information!



## **Fair Awards**

Thank you to all of our Fair Awards Sponsors! It is because of your support we are able to have the Best County Fair in America!!!

Listed here are the awards that still need sponsored for the 2025 fair!

- Sr. Dairy Showmanship (\$20)
- Int. Champion Photography, Color (\$20)
- Int. Livestock Judging Notebook (\$20)
- Livestock Skill-A-Thon Buckle (\$100 can be co-sponsored)
- Livestock Judging: Prize Donations
- Int. Champion Round Robin Buckle (\$100)
- Call Jeanna with Breed Award Interest (\$20)

## **Tractor Safety**

June 2nd-3rd at KanEquip in Wamego, KS! Youth aged 10-16 to learn more about tractor and machinery safety in agriculture production and rural life! If you are interested please give Shannon Blocker a call at 785-457-3319 to register! Attached to this newsletter is a larger flyer!



## **4-H TRIPLe E Exchange Experience**

- Multi-County 4-H Interstate Exchange Trip and 4-Hers 12-18yrs old by June 10th 2025 are eligible
- Recent Trips include Ohio in 2023 and North Carolina in 2024: We stayed with 4-H families to learn their customs, lifestyle, 4-H activities, and toured educational and historical sites in their states, plus en-route.
- Week of July 6th 2025, we will be hosting 4-Hers/Chaperones from North Carolina and Pennsylvania
- 2026 we will travel to Eastern Pennsylvania
- Currently seeking families to become involved with the only cost being a \$75 application fee per 4-Her, and requirement to help with fundraisers and activities. Expenses covered by 4-H TRIPLe E through fund raising.
- Interested?? Contact Cherie Trieb at 785-844-0781: Next meeting: February 25th, 7:00 PM at Green Valley Community Center, Green Valley Road, Manhattan. Please plan to arrive early, if this is your 1st meeting.

## **KSRE Insect-Themed Art Contest**

The K-State Research and Extension Pesticide Safety and IPM Program is hosting its annual insect-themed art contest, open to all ages and skill levels in Kansas! This year, the theme is "By the Light of the Moon: Insects at Night." The goal is to explore which insects are active or inactive at night and why, then create artwork that fits the contest theme.

## **Kansas 4-H Discovery Days**

**When:** June 4-6th, 2025

**Who:** Youth ages 13-18 before January 1, 2025

**Cost:** \$235; some sessions may require an additional fee

**Theme:** Building a Mindset for Leadership

**Registration:** [Register online here!](#)

Discovery Days is a mini college experience designed for youth. They will have the opportunity to select classes and attend social functions. The primary purpose of 4-H Discovery Days is to gain new ideas and expand your 4-H experience. You experience this through action-oriented learning activities, fun tours, and great evening social events. You will meet new people, build leadership skills, and grow as a person!

- Help youth learn new ideas, techniques, and skills they can use personally and in their 4-H clubs or groups and communities
- Give youth in-depth training through hands-on educational sessions from content and youth development experts
- Prepare youth to make informed decisions about their careers and college path
- Enhance personal growth by giving opportunities to develop responsibility, confidence, independence, accountability, problem-solving, decision-making, and time management skills
- Help youth meet new people and make new friends from different places and with different backgrounds from across the state
- Provide an opportunity for youth to experience the K-State campus and its wealth of resources
- Develop college and career readiness skills that prepare participants academically and socially for a successful transition to college and life as an adult
- **HAVE FUN!**

Discovery Days participants will be included in a special recognition event honoring the State Project Award Winners. This event will be held in the K-State Student Union on the evening of Thursday, June 5th and will include an evening social and entertainment.



## **Kansas Youth Range Camp**

- June 10-13, Council Grove, KS
- \$300 Registration Fee with scholarships available!
- See Attached Flyer
- Register [HERE!](#)

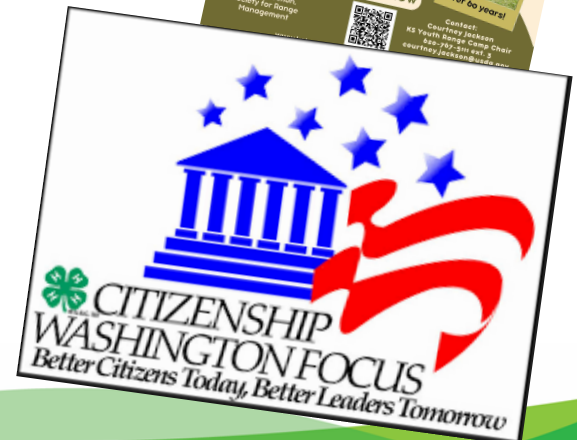


## **4-H Camp 2025**

All 4-H camp sessions are now available for registration online at [www.rockspringsranch4hcamp.org](http://www.rockspringsranch4hcamp.org). This includes half week, full week, Leaders in Training (LIT), and Counselors in Training (CIT) sessions.

## **Citizen Washington Focus**

Greetings CWF delegates and families! We will be attending the 2nd Session 6/14-6/20: Leaving Manhattan on 6/11 and returning on 6/21/25! The future meetings will be held in Portoff Hall at 7pm and the dates are **April 15**, May 20 with the departure on June 11 (early a.m. from the Riley County Extension Office). The tentative conference schedule can be found [HERE](#).



## **Riley County Kennel Club Schedule: Spring 2025**

- Practices will be from 6:45 - ~8:00, on either Tuesdays or Wednesdays at Pottorf Hall, Riley Co Fairgrounds.
- April, Wednesday April 2, Tuesday April 8, Wednesday April 16 Tuesday April 22, Wednesday April 30
- May, Wednesday May 7, Tuesday May 13, Wednesday May 21 Tuesday May 27
- June, Wednesday June 4, Tuesday June 10, Tuesday June 17, Wednesday June 25
- County Fair dates: June 8 Showmanship and Obedience, June 29 Agility and Rally Obedience

## **ZBooks - Project Reports Online!**

A new online record book option is here for Kansas 4-H youth. Zbooks provides an online platform for keeping and organizing project report records. Zbooks should make projects reports a lot easier to make and maintain!

-The website for zbooks is: [4h.zsuite.org](http://4h.zsuite.org)

-Visit the Kansas information site [here](#).

-Find a quick video overview of using [Zbooks for record projects at this link](#).

### **Also, some perks of Zbooks are:**

- Mobile friendly- jot down notes, weights, ear tags, expenses, etc on the spot!
- Internet based- you can work on them from any device that is connected to the internet.
- Unlimited amount of entries until final report is submitted- youth select the allowed number of entries to print on final report, allowing them to prioritize, summarize, etc.
- Permanent Record is also included possible awards to think about!



## **Newsletter Suggestions**

If you have anything you would like to see in the Newsletter each month feel free to email Amber at [asharpe@ksu.edu](mailto:asharpe@ksu.edu) and I can get it in there!

# What has propelled your 4-H Experience?





## **Dates to Remember**

### **April**

- 2 YQCA Training: Westmoreland
- 5 KSU Invitational Meats Judging Contest
- 5 Electricity Project Meeting: 8:30am-12:30pm, Sunflower Room
- 7 Hutchinson Livestock Judging Contest: Lyons, KS
- 11-12 CWF Garage Sale: Portoff Hall
- 15 CWF Meeting: Portoff Hall: 7pm
- 17 State Youth Entrepreneurship Contest Judging
- 20 Last Day to Order DNA Envelopes for State Fair/KJLS Livestock
- 19-24 National 4-H Conference, Washington D.C.
- 30 Small Animal Weigh In at the Extension Office in Westmoreland (5-7pm)

### **May**

- 1 Market Beef Nominations Due for State Fair and KJLS and DNA Postmarked
- 15 Tagging Deadline for ALL Livestock
- 20 CWF Meeting: Portoff Hall: 7pm

### **June**

- 5 Last Day to order Small Livestock DNA Envelopes
- 4-6 Discovery Days
- 10-13 KS Youth Range Camp
- 15 Small Livestock Nominations Due for State Fair and KJLS and DNA Postmarked
- 11-21 Citizen Washington Focus Trip
- 13-15 State Geology Field Trips
- 22-28 National Shooting Sports Championship

### **July**

- 10 Fair Entries Due on Fair Entry
- 15 Kansas State Fair Grade Drive Entry Deadline
- Rock Springs Camp


### **August**

- 30-3 The Best Fair in America! Pottawatomie County!
- 1 Cool Careers Video's Due to HirePaths
- 15 KJLS Entry Deadline

### **September**

- 5-14 Kansas State Fair
- 5-7 Kansas State Fair Grand Drive

### **October**

- 1 New 4-H Year
  - 3-5 KJLS
- 



# **4-H Garage Sale**

## **April 11-12**

**Wreath Barn, Cico Park, Manhattan**

**We are looking for a huge selection of items  
to be donated.**

**We do not accept TVs or Books of any kind.**

**Proceeds benefit 4-H members in Pottawatomie, Riley,  
& Wabaunsee Counties**

## **Drop Off Items on Location**

**Wednesday, April 9, 5-8 PM**

**Thursday, April 10, 10 AM - 8 PM**

## **Garage Sale**

**Friday, April 11, 9 AM - 8 PM**

**Saturday, April 12, 9 AM - Noon**

**Questions: Call John Jobe, 785-537-6350**

**K-STATE**  
Research and Extension



K-State Research and Extension is committed to providing equal opportunity for participation in all programs, services and activities. Program information may be available in languages other than English. Reasonable accommodations for persons with disabilities, including alternative means for communication (e.g., Braille, large print, audio tape, and American Sign Language) may be requested by contacting the event contact John Jobe, two weeks prior to the start of the event. Requests received after this date will be honored when it is feasible to do so. Language access services, such as interpretation or translation of vital information will be provided free of charge to limited English proficient individuals upon request.

Kansas State University Agricultural Experiment Station and Cooperative Extension Service  
K-State Research and Extension is an equal opportunity provider and employer.

APRIL 19, 2025

POTTAWATOMIE COUNTY

# SPRING FLING

★ LIVESTOCK SHOW ★



## Show Times

Sheep-Goat - 9:00 AM  
Cattle - 12:00 PM  
Swine - 5:00 PM  
OR 30 Minutes After  
Completion of Prior Species

New for  
2025

Contestants can be up  
to 21 years of age.  
Showmanship for 4-H age  
contestants only.  
No showmanship 19-21.

## Online Registration

[www.showman.app](http://www.showman.app)  
\$10 Late Fee Day of Show

## Details

Judge: Jacob Klaudt  
Elite Show Supply Trailer  
Showmanship \$5 Per Specie  
Concessions on Site

## Camping Spots

Available for \$35  
785-477-2317

POTTAWATOMIE COUNTY FAIRGROUNDS  
ONAGA, KANSAS

Questions Contact  
Darrin Figge 785-456-5762 [defigge@hotmail.com](mailto:defigge@hotmail.com)

# GRAND DRIVE & KJLS IMPORTANT DATES

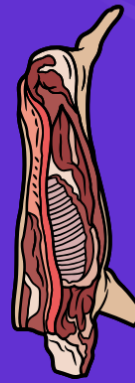
|                    |  |
|--------------------|--|
| <b>April 20</b>    | <b>Last Day to Order Beef DNA Envelopes</b>  |
| <b>May 1</b>       | <b>Market Beef Nominations Due Online &amp; DNA Postmarked</b>   |
| <b>June 5</b>      | <b>Last Day to Order Small Livestock DNA Envelopes</b>   |
| <b>June 15</b>     | <b>Small Livestock Nominations Due Online &amp; DNA Postmarked</b><br><b>-Market Swine, Commercial Breeding Gilt</b><br><b>-Market Lamb, Commercial Breeding Ewe</b><br><b>-ALL Meat Goat (<i>Market &amp; Breeding</i>)</b> |
|                    | <b>Commercial Heifer Nominations Due Online &amp; DNA Postmarked</b>   |
|                    | <b>Registered Breeding Heifer Papers in Exhibitor's Name</b>   |
|                    | <b>Registered Steer Papers in Exhibitor's Name</b>   |
|                    | <b>Registered Breeding Gilt Papers in Exhibitor's Name</b>   |
| <b>July 1</b>      | <b>Registered Breeding Ewe Papers in Exhibitor's Name</b>  |
| <b>July 15</b>     | <b>Kansas State Fair Grand Drive Entry Deadline</b>  |
| <b>July 25</b>     | <b>Kansas State Fair Grand Drive Late Entry Deadline</b>   |
| <b>August 15</b>   | <b>KJLS Entry Deadline</b>   |
| <b>August 31</b>   | <b>KJLS Late Entry Deadline</b>  |
| <b>Sept. 5 - 7</b> | <b>Kansas State Fair Grand Drive</b>   |
| <b>Oct. 3 - 5</b>  | <b>KJLS</b>  |

\*All market animals must be nominated to be eligible for either show, regardless of breed or gender.

\*\*All commercial breeding females must be nominated to be eligible for either show.

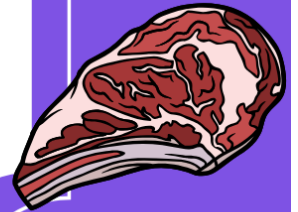
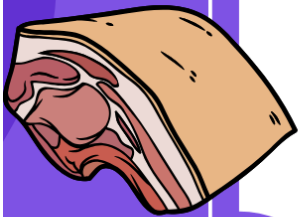
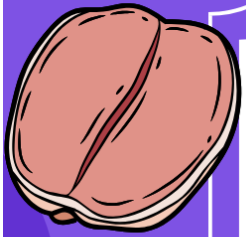
\*\*\*Registered breeding females must be in the exhibitor's name by the appropriate date to be eligible for either show. Refer to show rules for details.

\*\*\*\*All meat goats, including market, commercial breeding does, and registered breeding does must be nominated to be eligible for either show.



# KANSAS STATE UNIVERSITY

## INVITATIONAL MEAT JUDGING CONTEST



**APRIL 5, 2025**

**WEBER HALL  
REGISTRATION OPENS AT 7:00AM  
CONTEST BEGINS AT 8:00AM**

**REGISTRATION INFO TO COME  
QUESTIONS TO ERIN BEYER  
ERBEYER@KSU.EDU**



# TRACTOR AND MACHINERY SAFETY TRAININGS

Presented by **K-STATE**  
Research and Extension

of Douglas, Geary, Marshall, Pottawatomie  
and Shawnee Counties

Join youth aged 10 to 16 on June 2nd and/or 3rd to learn more about tractor and machinery safety in agriculture production and rural life! This year, we are offering two tracks of learning for youth to engage with our trainings.

**KanEquip of  
Wamego**

18035 East Hwy 24,  
Wamego, KS 66547



## Certification Track

**June 2nd and 3rd +  
Online Training Sessions**

If you are a 14 or 15-year-old, you must complete Tractor and Machine Operation training to operate most tractors and common farm machinery when working for someone other than a parent or a person standing in the place of a parent on a farm owned or operated by such parent or person. Successful completion of this track will allow you to leave on June 3rd with a certification to be employed off the family farm for non-parents in operating tractors and specific farm machinery.

**\$40 Registration Fee**



## General Safety Track

**June 2nd**

In this 8-hour track, you will learn about farm and rural safety in all aspects, including machinery, animal, recreation and more. This track is focused on ways to keep you and other youth safe in everyday operations. *\*This training will not certify youth for employment off the family farm but is intended for educational purposes only.*

**\$15 Registration Fee**



**Registration closes May 16th. Call 785-232-0062 or your local extension office to register for this event.**

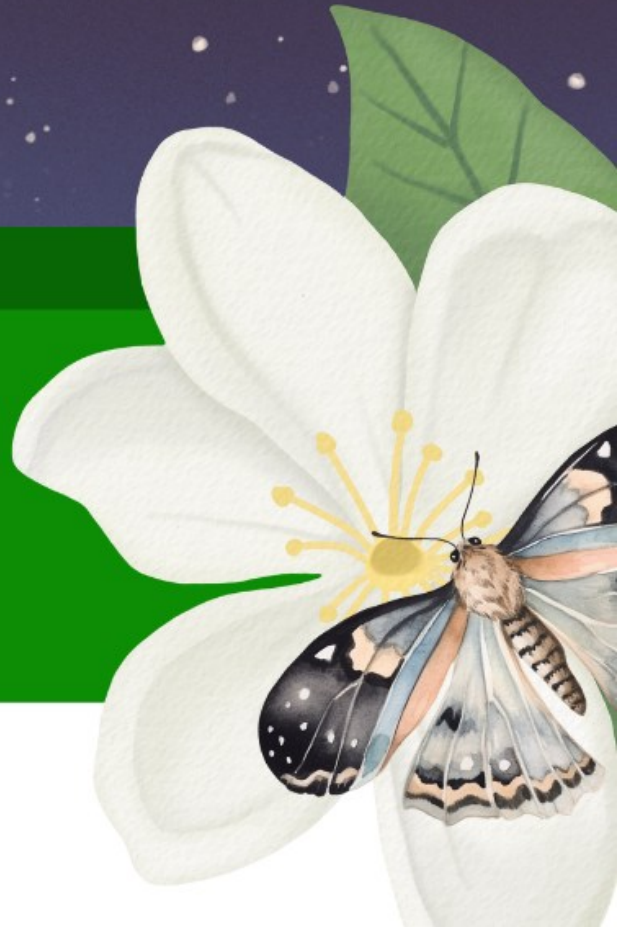
K-State Research and Extension is committed to providing equal opportunity for participation in all programs, services and activities. Program information may be available in languages other than English. Language access requests and reasonable accommodations for persons with disabilities, including alternative means for communication (e.g., Braille, large print, audio tape, and American Sign Language), may be requested by contacting Shannon Blocker by May 5th at 785-457-3319 or sblocker@ksu.edu. Requests received after this date will be honored when it is feasible to do so. Language access services, such as interpretation or translation of vital information will be provided free of charge to limited English proficient individuals upon request. Kansas State University Agricultural Experiment Station and Cooperative Extension Service. K-State Research and Extension is an equal opportunity provider and employer.

# 2025 ART CONTEST BY THE LIGHT OF THE MOON INSECTS AT NIGHT

Join in the fun!

Learn more at  
[https://www.ksre.k-state.edu/  
pesticides-ipm](https://www.ksre.k-state.edu/pesticides-ipm)

Submission Deadline:  
April 15, 2025



**K-STATE**  
Research and Extension

Integrated Pest  
Management

Are YOU interested in plants, livestock or wildlife?



# KANSAS YOUTH RANGE CAMP

White Memorial Camp, Council Grove, KS

Upcoming High School Sophomores, Juniors, & Seniors

Learn about range plant identification, plant growth, stocking rates, livestock nutrition, and rangeland wildlife management

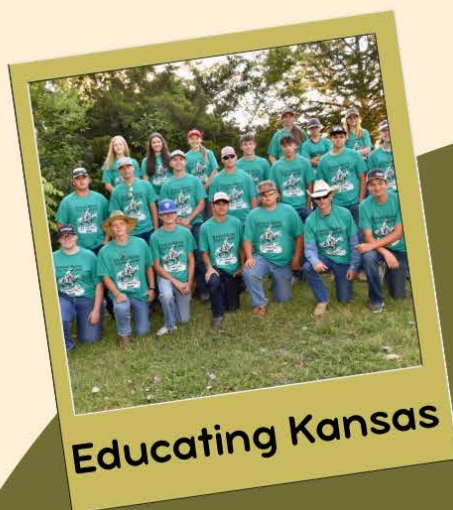
Enjoy field trips, hands on learning, a steak dinner, swimming, fishing, and hiking!



June 10-13, 2025

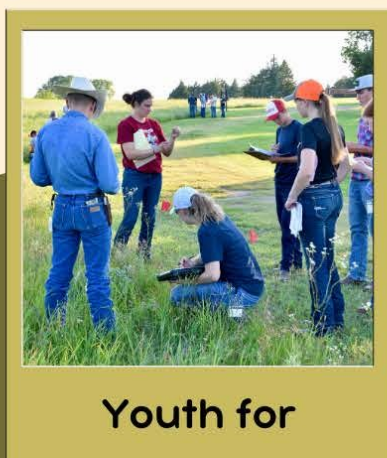
COST: \$300

Contact your local Conservation District for scholarship opportunities!



Educating Kansas

Sponsored by:  
Kansas Section,  
Society for Range  
Management



Youth for

**REGISTER NOW**



Over 60 years!

Contact:  
Courtney Jackson  
KS Youth Range Camp Chair  
620-767-5111 ext. 3  
courtney.jackson@usda.gov

[www.kglc.org/range-youth-camp-registration.cfm](http://www.kglc.org/range-youth-camp-registration.cfm)

JUDGING HORSE JUDGING HORSE JUD

# HORSE

ASHLYNNE K

&

DALTON K.



JUDGING HORSE JUDGING HO

**ASHLYNNE K.**

- 1<sup>st</sup>: Overall Individual
- 2<sup>nd</sup> Individual Reasons
- 1<sup>st</sup> Individual Performance
- 3<sup>rd</sup> Individual Halter


**POTT/RILEY/GEARY TEAM**

- 1<sup>st</sup>: Overall Team
- 1<sup>st</sup> Team Reasons
- 1<sup>st</sup> Team Halter
- 1<sup>st</sup> Team Performance

**DALTON K.**

- 2<sup>nd</sup>: Open Limited Division Horse Judging Contest

JUDGING HORSE JUDGING H



# LEVEL UP

**FITTING & SHOWMANSHIP CLINIC**

**SATURDAY & SUNDAY**

**MAY 10-11**

*Dawson County Fairgrounds - Lexington, Nebr.*

***Two full days of learning!***

**DAILY ROUTINES FOR SUCCESS, FEEDING, CLIPPING, FITTING, AND SHOWMANSHIP**

*Bring your own calf & supplies.*

*Breakfast, lunch, & event t-shirt will be included with registration.*



**FIND US ON FACEBOOK FOR UPDATED DETAILS**



**SCAN TO ENTER**

**Bailey McKay (308)470-1289 | Josh Taylor (308)991-7239**